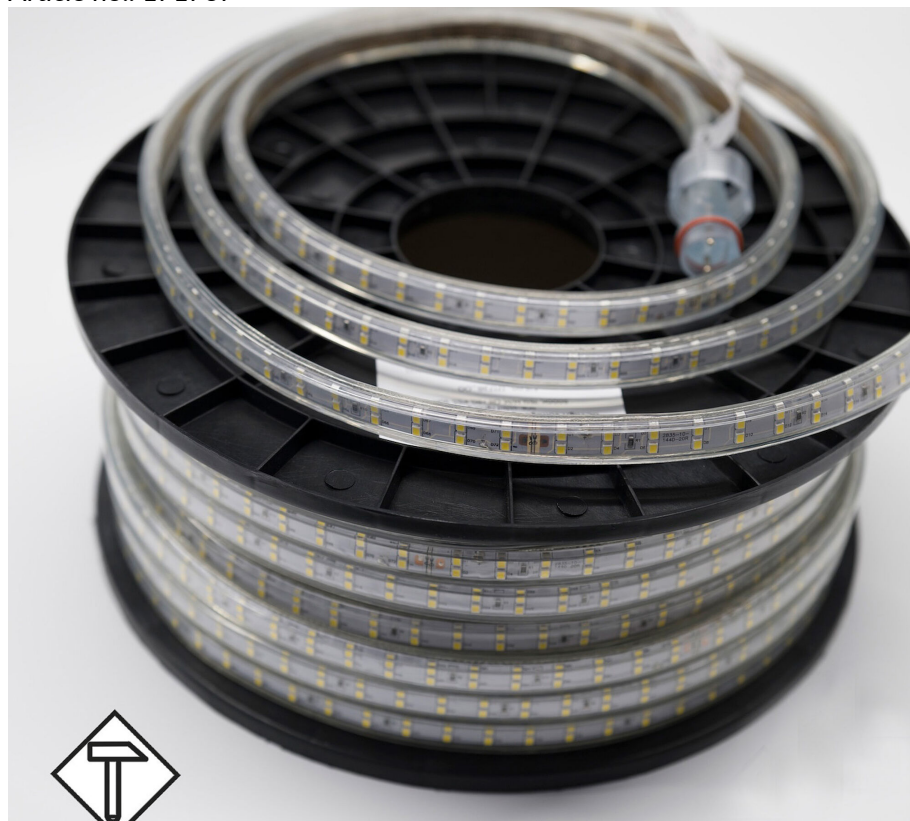


BL HVS light tube one-sided on a reel

BL High Voltage LED light tube 765lm/m 230VAC 8W/m IP65 860 25m on reel

Article no.: 171737



100000

Max. length

IP65

Degree of protection (IP)

6000

Colour temperature

TENDER TEXT

LED light tube High Voltage 765 lm/m single-sided lighting, 230VAC, 8W/m, 95.6 lm/W, IP65, CRI>80, 6000K, on a reel, 25 meter LED module BL HVS light tube one-sided on a reel Article 171737 LED light tube on a practical spool for easy and quick unwinding. Using T-connectors, several light strips can be connected over a total length of 100000 ; Supply voltage 230 ; lamp power 8 , luminous flux 765 ; IP65 Protection type; color temperature 6000 ; Beam angle 120 ; Dimensions light tube 15 mm x height 7 , on a spool; LEDs per meter 144 two rows, LED spacing 13.89 ; Shock resistance IK07

TOP-FEATURES

- //__ Space-saving and efficiently stackable
- //__ UV-resistant, flame retardant class V1-V0
- //__ No external power supply required, connect directly to 230 AC
- //__ Daylight , homogeneous illumination over the entire length
- //__ Using T-connectors, a length of up to 150 meters is possible



BL HVS light tube one-sided on a reel

BL High Voltage LED light tube 765lm/m 230VAC 8W/m IP65 860 25m on reel

Article no.: 171737



MECHANICAL DATA

Width [mm]	15
Length	25000
Height/depth	7
Mounting method	sonstige
Colour	White
Model	Schlauch
Type of control gear	nicht erforderlich
Self-adhesive	nein
Lamp type	LED nicht austauschbar
Impact strength	IK07
Distance	13.89
Distance relating to	LED zu LED
Degree of protection (IP)	IP65
With protective cover	yes
Length of particular segments	25000
Number of lamps per meter	144

ELECTRICAL DATA

Protection class	II
Voltage type	AC
Lamp voltage	230
Lamp power per meter	8
Overall efficiency	96

LIGHT TECHNICAL DATA

Beam angle	120
Colour rendering index CRI	>80
Colour temperature	6000
Colour of light	White
Luminous flux per meter	765
Energy efficiency class of the built-in lamp	F
Colour consistency (McAdam ellipse)	SDCM5

CONNECTION

Number of poles	2
Max. length	100000

TEMPERATURE TECHNICAL DATA

Ambient/storage temperature	- 20 ... + 60
-----------------------------	---------------

Impact strength IK07
Ambient temperature during operating 25 ... +45
Rated life time L70/B50 at 25 °C 36000
BL HVS light tube one-sided on a reel
BL High Voltage LED light tube 765lm/m 230VAC 8W/m IP65 860 25m on reel



Article no.: 171737

PACKAGING INFORMATION

State of origin	CN
Customs tariff number	94059900
Net weight [g]	3000
Gross weight [g]	4500
Gross width [mm]	250
Gross height [mm]	250
Gross length [mm]	135
Net width [mm]	15
Net height [mm]	7
Net length [mm]	25000

* Information about the electrical and lighting technology measurements: Performance data measured after 1 min. at 25 °C ambient temperature and a light colour of 4,000 K (or RGB). These values can have a tolerance value of -/+ 10% (or -/+ 15 %at ECO / TWO / RGB / AIR). Module length at 24 V input voltage at the module and luminous flux drop 10% over the specified length.

NECESSARY ACCESSORIES

Article	Article no.
Cable 800W for LED Light tube	171742
Cable 1500W for LED Light tube	171743

SAFETY INFORMATION: Read the safety and installation instructions carefully and completely before commissioning. The operating instructions can be found at: www.better-light.at

DISCLAIMER OF WARRANTY: The technical information corresponds to the status at the time of printing and have been worked out to the best of our knowledge. However, errors and printing errors are reserved. Make sure that you always use the latest version of the data sheets. The latest data sheet can be found at: www.better-light.at