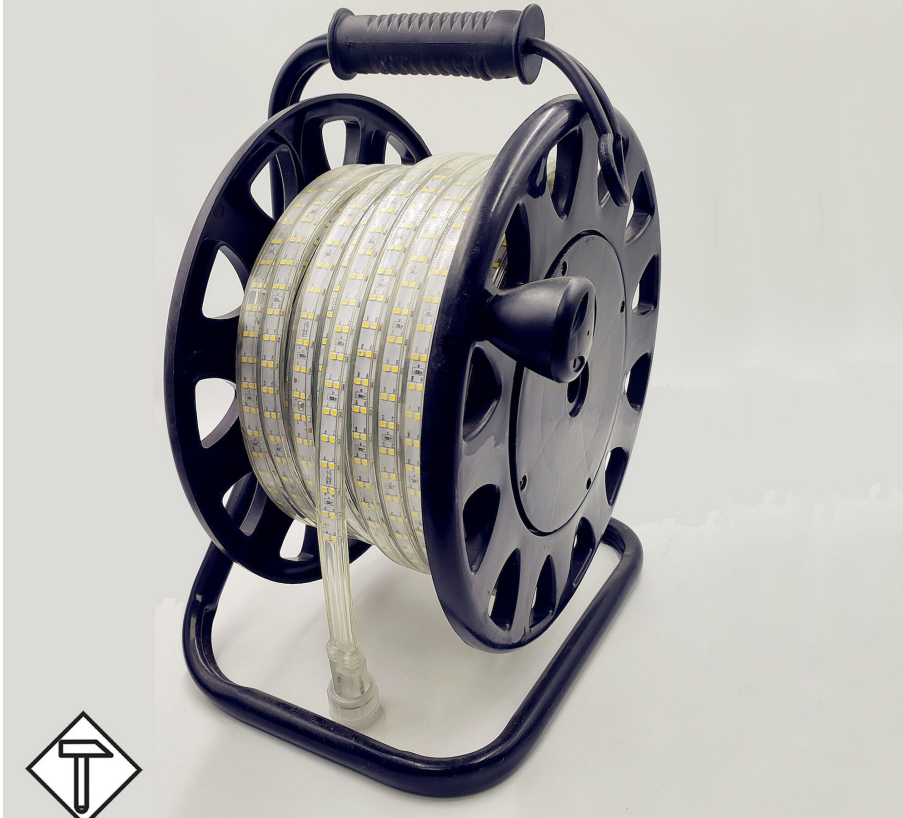


BL HVR light tube on cable drum

BL High Voltage lighth tube 765lm/m 230VAC 8W/m IP65 860 25m cable drum

Article no.: 171782



100000

Max. length

IP65

Degree of protection (IP)

6000

K

Colour temperature

TENDER TEXT

LED lighth tube High Voltage 765 lm/m single-sided lighting, 230VAC, 8W/m, 95.6 lm/W, IP65, CRI>80, 6000K, on a cable drum 25 meters LED module BL HVR light tube on cable drum Article 171782 LED light tube on a more portable cable drum for easy and quick unwinding. Using T-connectors, several light strips can be connected over a total length of 100000 ; Supply voltage 230 ; lamp power 8 , luminous flux 765 ; IP65 Protection type; color temperature ###Attribut.6751###; Beam angle 120 ; Dimensions light tube 15 x height 7 , on a spool; LEDs per meter 144 two rows, LED spacing 13.89 ; Shock resistance

TOP-FEATURES

//__ Space-saving and efficient to use thanks to the cable drum

//__ UV-resistant, flame retardant class V1-V0

//__ No external power supply required, connect directly to 230 AC

//__ Daylight , homogeneous illumination over the entire length

//__ Using T-connectors, a length of up to 150 meters is possible



BL HVR light tube on cable drum

BL High Voltage lighth tube 765lm/m 230VAC 8W/m IP65 860 25m cable drum

Article no.: 171782



MECHANICAL DATA

Width	15
Length	25000
Height/depth	7
Mounting method	sonstige
Model	Schlauch
Type of control gear	nicht erforderlich
Self-adhesive	nein
Lamp type	LED nicht austauschbar
Distance	13.89
Distance relating to	LED zu LED
Degree of protection (IP)	IP65
With protective cover	yes
Length of particular segments	25000
Number of lamps per meter	144

ELECTRICAL DATA

Protection class	II
Voltage type	AC
Lamp voltage	230
Lamp power per meter	8
Overall efficiency	96
Max. system power	8

LIGHT TECHNICAL DATA

Beam angle	120
Colour rendering index CRI	>80
Colour temperature [K]	6000
Colour of light	White
Luminous flux per meter	765
Energy efficiency class of the built-in lamp	F
Colour consistency (McAdam ellipse)	SDCM5

CONNECTION

Connection type	sonstige
Number of poles	2
Max. length	100000

TEMPERATURE TECHNICAL DATA

Ambient/storage temperature	- 20 ... + 60
-----------------------------	---------------

BL HVR light tube on cable drum

Ambient temperature during operating

- 20 ... + 45



BL High Voltage light tube 765mm/230VAC 8W/m IP65 860 25m cable drum

Article no.: 171782

State of origin

CN

Customs tariff number

94059900

Net weight [g]

3000

Gross weight [g]

5400

Gross width [mm]

330

Gross height [mm]

445

Gross length [mm]

245

Net width [mm]

15

Net height [mm]

7

Net length [mm]

25000

* Information about the electrical and lighting technology measurements: Performance data measured after 1 min. at 25 °C ambient temperature and a light colour of 4,000 K (or RGB). These values can have a tolerance value of -/+ 10% (or -/+ 15 %at ECO / TWO / RGB / AIR). Module length at 24 V input voltage at the module and luminous flux drop 10% over the specified length.

NECESSARY ACCESSORIES

Article

Article no.

Cable 1500W for LED Light tube

171743

Cable 800W for LED Light tube

171742

SAFETY INFORMATION: Read the safety and installation instructions carefully and completely before commissioning. The operating instructions can be found at: www.better-light.at

DISCLAIMER OF WARRANTY: The technical information corresponds to the status at the time of printing and have been worked out to the best of our knowledge. However, errors and printing errors are reserved. Make sure that you always use the latest version of the data sheets. The latest data sheet can be found at: www.better-light.at