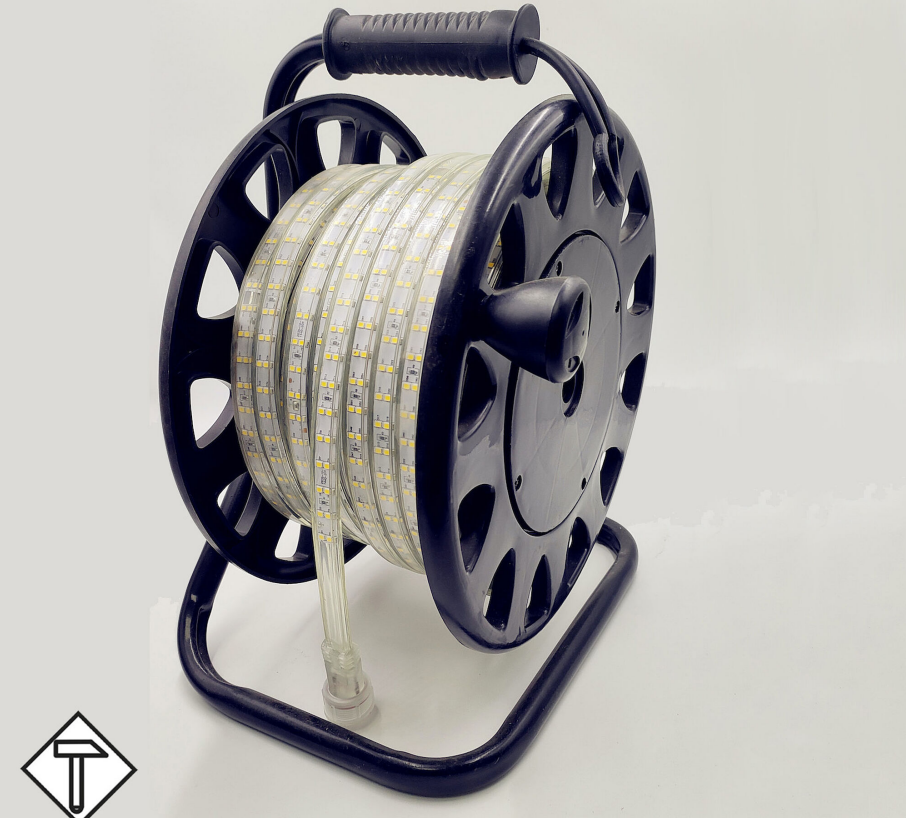


BL HVR light tube on cable drum

BL High Voltage lighth tube 765lm/m 230VAC 8W/m IP65 860 50m cable reel
Article no.: 171783



220 - 240

Input voltage range

75000

Max. length

IP65

Degree of protection (IP)

6000

Colour temperature

TENDER TEXT

LED light tube High Voltage 765 lm/m single-sided illumination, 230VAC, 8W/m, 95.6 lm/W, IP65, CRI>80, 6000K, on a cable drum 50 meters LED module BL HVR light tube on cable drum Article 171783 LED light tube on a more portable cable drum for easy and quick unwinding. Using T-connectors, several light strips can be connected over a total length of 75000 ; Supply voltage 230 ; lamp power 8 , luminous flux 765 ; IP65 Protection type; color temperature ###Attribut.6751###; Beam angle 120 ; Dimensions light tube 15 x height 7 , on a spool; LEDs per meter 144 two rows, LED spacing 13.89 ; Shock resistance

TOP-FEATURES

- //__ Space-saving and efficient to use thanks to the cable drum
- //__ UV-resistant, flame retardant class V1-V0
- //__ No external power supply required, connect directly to 230 AC
- //__ Daylight , homogeneous illumination over the entire length
- //__ Using T-connectors, a length of up to 150 meters is possible



BL HVR light tube on cable drum

BL High Voltage lighth tube 765lm/m 230VAC 8W/m IP65 860 50m cable reel

Article no.: 171783



MECHANICAL DATA

Width	15
Length	50000
Height/depth	7
Mounting method	sonstige
Model	Schlauch
Self-adhesive	nein
Lamp type	LED nicht austauschbar
Distance	13.89
Distance relating to	LED zu LED
Degree of protection (IP)	IP65
With protective cover	yes
Length of particular segments	50000
Number of lamps per meter	144

ELECTRICAL DATA

Protection class	II
Voltage type	AC
Lamp voltage	230
Input voltage range	220 - 240
Lamp power per meter	8
Overall efficiency	96
Max. system power	8

LIGHT TECHNICAL DATA

Beam angle	120
Colour rendering index CRI	>80
Colour temperature	6000
Colour of light	White
Luminous flux per meter	765
Energy efficiency class of the built-in lamp	F
Colour consistency (McAdam ellipse)	SDCM5

CONNECTION

Number of poles	2
Max. length	75000

TEMPERATURE TECHNICAL DATA

Ambient/storage temperature	- 20 ... + 60
Ambient temperature during operating	- 20 ... + 45

PACKAGING INFORMATION

BL High Voltage light tube on cable drum



State of origin CN
BL High Voltage light tube 765lm/m 230VAC 8W/m IP65 860 50m cable reel
 Customs tariff number 94059900
 Article no.: 171783
 Net weight [g] 6000

BETTER LIGHT

Gross weight [g]	8700
Gross width [mm]	330
Gross height [mm]	445
Gross length [mm]	245
Net width [mm]	15
Net height [mm]	7
Net length [mm]	50000

* Information about the electrical and lighting technology measurements: Performance data measured after 1 min. at 25 °C ambient temperature and a light colour of 4,000 K (or RGB). These values can have a tolerance value of -/+ 10% (or -/+ 15 %at ECO / TWO / RGB / AIR). Module length at 24 V input voltage at the module and luminous flux drop 10% over the specified length.

NECESSARY ACCESSORIES

Article	Article no.
Cable 1500W for LED Light tube	171743
Cable 800W for LED Light tube	171742

SAFETY INFORMATION: Read the safety and installation instructions carefully and completely before commissioning. The operating instructions can be found at: www.better-light.at

DISCLAIMER OF WARRANTY: The technical information corresponds to the status at the time of printing and have been worked out to the best of our knowledge. However, errors and printing errors are reserved. Make sure that you always use the latest version of the data sheets. The latest data sheet can be found at: www.better-light.at