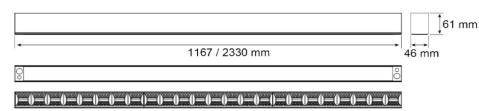
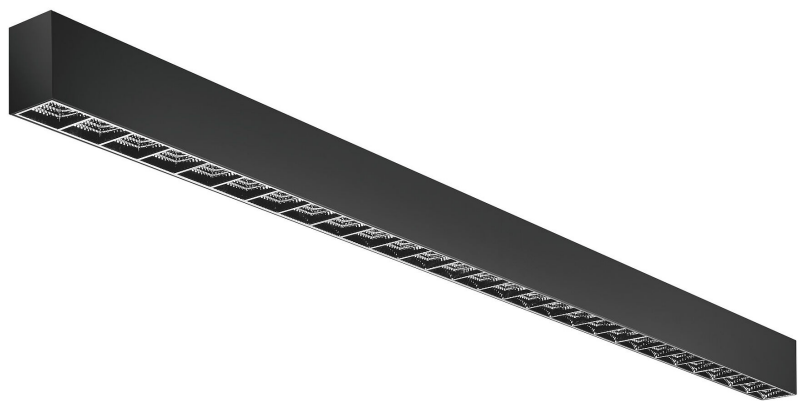


Linear Trend surface-mounted luminaire

BL Linear Trend surface-mounted luminaire 2330mm 10000lm 90W 90D 840 black DALI
Article no.: 701030



Length



Material



Colour temperature



Flicker-free

TENDER TEXT

Linear surface-mounted luminaire, black aluminium housing, reflector optics incl. DALI power supply unit, mounting clips and end caps, 10,000 lumens, 90W, 90° direct beam, CRI >80, 4,000 Kelvin, IP20, dimensions: L 2,330 x W 46 x H 61mm Linear Trend surface-mounted luminaire Article 701030 Linear LED luminaire with combined Linsen- Reflektoroptik optics and direkt lighting; High-quality, Black coated profile made of Aluminium , without visible screws, ambient temperatures of -20 ... +40 with a service life of 50000 , luminous flux 10000 , connected load 90 , luminous efficacy 111 , colour rendering >80 , colour consistency SDCM3 , UGR

TOP-FEATURES

- //__ Best light quality with precise glare control and homogeneous light distribution
- //__ Available as surface-mounted or pendant light
- //__ Light emission direkt
- //__ Optics Linsen- Reflektoroptik



Linear Trend surface-mounted luminaire

BL Linear Trend surface-mounted luminaire 2330mm 10000lm 90W 90D 840 black DALI

Article no.: 701030



MECHANICAL DATA

Material	Aluminium
Colour housing	Black
Width	46
Length	2330
Height/depth	61
Mounting method	Aufbau
Lamp type	LED austauschbar
Type of fastening	Mounting brackets
Suitable for strip light configuration	yes
Material of the cover	Linsen - Reflektoroptik
Degree of protection (IP)	IP20
With lamp	yes
Control gear included	yes
Unified Glare Ratio (UGR)	<22

ELECTRICAL DATA

Protection class	III
Voltage type	AC
Power factor	0,95
Nominal voltage	220 - 240
Operating frequency	50 / 60
Overall efficiency	111
Max. system power	90
Power factor	0.95
Dimming DALI	yes
Flicker percent (< 165 Hz)	<3

LIGHT TECHNICAL DATA

Beam angle	90
Colour rendering index CRI	>80
Light exit	direkt
Light distribution	symmetrical
Rated luminous flux according to IEC 62722-2-1	10000
Colour temperature	4000
Colour of light	White
Energy efficiency class provided exchangeable built-in lamp	F
Colour consistency (McAdam ellipse)	SDCM3
Flicker-free	yes

TEMPERATURE TECHNICAL DATA

Linear Trend surface-mounted luminaire

Ambient temperature during operating

- 20 ... + 40

BL Linear Trend surface-mounted luminaire 2330mm 10000lm 90W 90D 840 black DALI

Rated life time L80/B10 at 25 °C

50000

Article no.: 701030



BETTER LIGHT

PACKAGING INFORMATION

State of origin	CN
Net weight [g]	3450
Net width [mm]	46
Net height [mm]	61
Net length [mm]	2330

SAFETY INFORMATION: Read the safety and installation instructions carefully and completely before commissioning. The operating instructions can be found at: www.better-light.at

DISCLAIMER OF WARRANTY: The technical information corresponds to the status at the time of printing and have been worked out to the best of our knowledge. However, errors and printing errors are reserved. Make sure that you always use the latest version of the data sheets. The latest data sheet can be found at: www.better-light.at