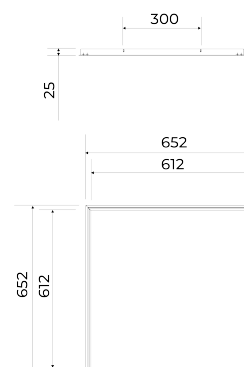
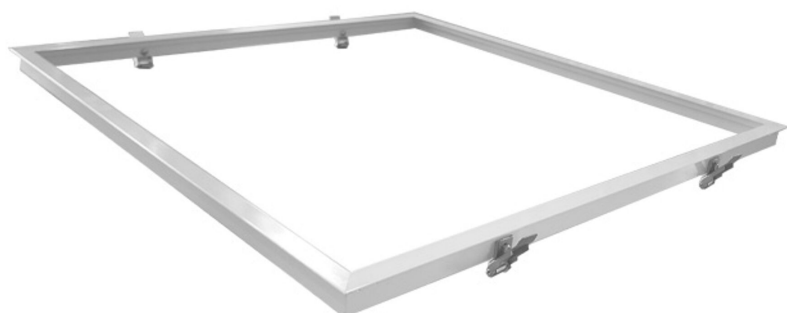


Installation frame

BL recessed mounting kit for panel 620x620 and 623x623 aluminium white RAL 9003

Article no.: 719202



Aluminium

Material

Einbau

Mounting method

White

Colour

TENDER TEXT

BILTON LEDON Technology Installation frame Article 719202 The Installation frame consists of Aluminium in the color White . Einbau of the panel. The square version uses 4 springs (arranged in 2×2) and the rectangular version uses 6 springs (arranged in 3×2), suitable for ceiling thicknesses of 15–30 mm. Dimensions (L x W x H): 652 x 652 x 25



Installation frame

BL recessed mounting kit for panel 620x620 and 623x623 aluminium white RAL 9003

Article no.: 719202



MECHANICAL DATA

Material	Aluminium
Width	652
Length	652
Height	25
Mounting method	Einbau
Colour	White
Type of accessory	Einbaurahmen
Transparent	nein
Accessory	yes

PACKAGING INFORMATION

State of origin	CN
Customs tariff number	94059900
Net weight [g]	480
Gross weight [g]	28000
Gross width [mm]	350
Gross height [mm]	350
Gross length [mm]	740
Net width [mm]	652
Net height [mm]	25
Net length [mm]	652

SAFETY INFORMATION: Read the safety and installation instructions carefully and completely before commissioning. The operating instructions can be found at: www.better-light.at

DISCLAIMER OF WARRANTY: The technical information corresponds to the status at the time of printing and have been worked out to the best of our knowledge. However, errors and printing errors are reserved. Make sure that you always use the latest version of the data sheets. The latest data sheet can be found at: www.better-light.at