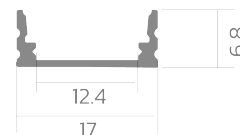
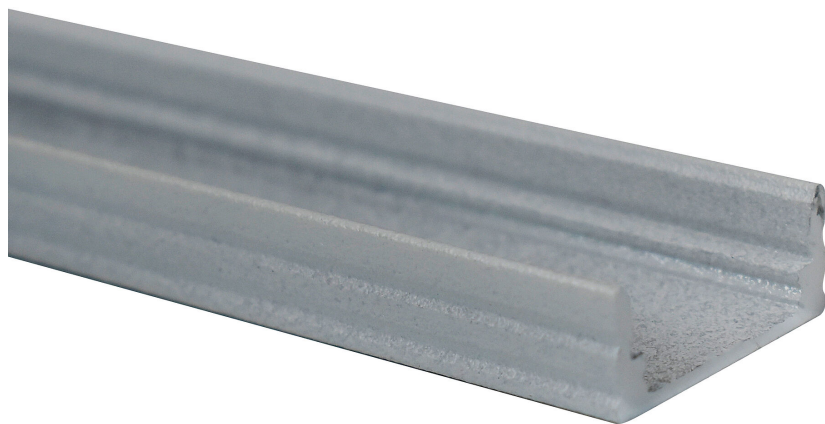


Surface-mounted profile BLine P-S-ON01

BLine P-S-ON01 LED built-on profile Alu silver 12W/m W17 x H6.8 x L3000 mm

Article no.: 171756



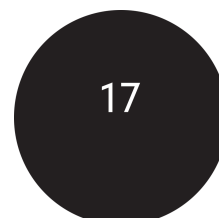
Material



Power consumption



Height



Width

TENDER TEXT

Surface mounted profile made of silver anodized aluminum Power consumption 12W/m, W 17 x H 6.8 x L 3000 mm BILTON LEDON Technology Surface-mounted profile BLine P-S-ON01 Article 171756 The Surface-mounted profile BLine P-S-ON01 can be combined with all covers from the BLine-S family. The profile is made of Aluminium with an Silber anodisiert/eloxiert finish and has a power consumption of up to 12 . Dimensions (L x W x H): 3000 x 17 x 6.8 Please note that cutting tolerances of +/- 2mm may occur.

TOP-FEATURES

- //_ Profile available in white, black and silver
- //_ Easy installation thanks to customised combinations
- //_ Suitable for LED strips up to 12
- //_ Covers available in satin, black and transparent



PACKAGING INFORMATION

Surface-mounted profile BLine P-S-ON01



BETTER LIGHT

State of origin	CN
BLine P-S-ON01 LED built-on profile Alu silver 12W/m W17 x H6.8 x L3000 mm	
Customs tariff number	94059900
Article no.: 171756	
Net weight [g]	297
Gross weight [g]	40600
Gross width [mm]	170
Gross height [mm]	170
Gross length [mm]	3050
Net width [mm]	17
Net height [mm]	6.8
Net length [mm]	3000

* Our aluminum profiles, plastic profiles, and associated accessories are intended exclusively for use in LED lighting, especially LED strips. They serve as integral components of luminaires and are designed for this purpose. Any other use, especially any misuse outside of LED lighting, is beyond our responsibility.

We assume no liability for damages or consequential costs resulting from improper use of our products.

SAFETY INFORMATION: Read the safety and installation instructions carefully and completely before commissioning. The operating instructions can be found at: www.better-light.at

DISCLAIMER OF WARRANTY: The technical information corresponds to the status at the time of printing and have been worked out to the best of our knowledge. However, errors and printing errors are reserved. Make sure that you always use the latest version of the data sheets. The latest data sheet can be found at: www.better-light.at