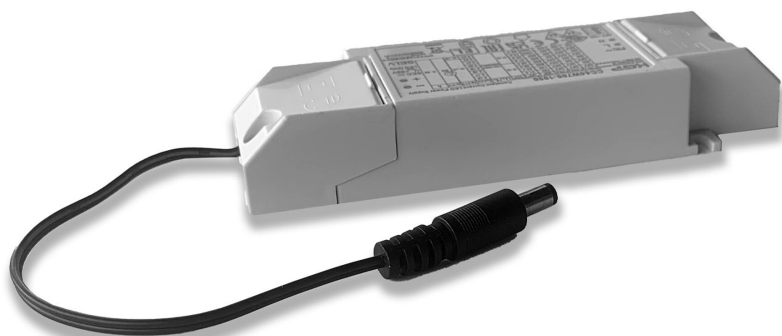


# Panel Comfort

LED DRIVER 220-240V CC 800mA 27-45VDC ON/OFF

Article no.: 719247



ohne

Control signal

IP20

Degree of protection (IP)

800

Output current range

---

## TENDER TEXT

incl. connection cable for Panel Gen5 Comfort BILTON LEDON Technology Panel Comfort Article 719247 The power supply can be used for a output voltage range of 27-45 . Constant current 800 . The supply voltage of the power supply is 198 - 264 and has a IP20 protection type and protection class II . Control signal ohne . Dimensions (L x W x H): 137.5 x 44 x 23



# Panel Comfort

LED DRIVER 220-240V CC 800mA 27-45VDC ON/OFF

Article no.: 719247



## PACKAGING INFORMATION

State of origin	CN
Customs tariff number	85044083
Net width [mm]	44
Net height [mm]	23
Net length [mm]	137.5

SAFETY INFORMATION: Read the safety and installation instructions carefully and completely before commissioning. The operating instructions can be found at: [www.better-light.at](http://www.better-light.at)

DISCLAIMER OF WARRANTY: The technical information corresponds to the status at the time of printing and have been worked out to the best of our knowledge. However, errors and printing errors are reserved. Make sure that you always use the latest version of the data sheets. The latest data sheet can be found at: [www.better-light.at](http://www.better-light.at)